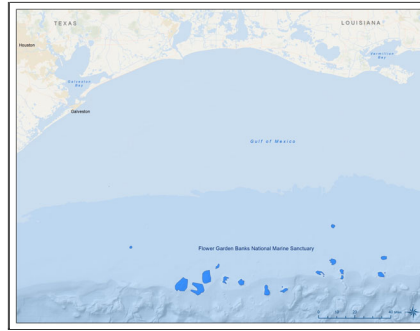


FGBNMS_py Shapefile



Tags

Flower Garden Banks, national marine sanctuary, Gulf of Mexico, marine protected area, Texas, Louisiana, salt dome, deepwater reef community

Summary

These GIS compatible digital files are provided to promote an understanding of the boundaries of each national marine sanctuary. They are based on the legal definition of each sanctuary as defined in the Code of Federal Regulations, at 15 C.F.R. Part 922 and the subparts for each national marine sanctuary. These digital files are not intended and should not be relied upon for use in navigation or legal purposes. For legal questions relating to these digital files specifically and the sanctuary boundaries in general, please contact the Office of National Marine Sanctuaries at the information provided in this metadata record.

Description

NOAA's Office of National Marine Sanctuaries (ONMS) oversees a system of sanctuaries and other managed areas around the country. The legal boundaries of these sanctuaries are defined within the Code of Federal Regulations, at 15 C.F.R. Part 922 and the subparts for each national marine sanctuary. The GIS compatible digital boundary files for each national marine sanctuary are representations of those legal boundaries and are based on the best available data. These files are available for public use at locations defined in this metadata record.

Credits

Office of National Marine Sanctuaries
National Ocean Service
National Oceanic and Atmospheric Administration
U.S. Department of Commerce

Use limitations

NOT FOR LEGAL USE

Extent

West -94.308880 **East** -91.972730

North 28.354560 **South** 27.783570

Scale Range

Maximum (zoomed in) 1:5,000

Minimum (zoomed out) 1:150,000,000

ArcGIS Metadata ▶

Topics and Keywords ▶

THEMES OR CATEGORIES OF THE RESOURCE boundaries

* CONTENT TYPE Downloadable Data

EXPORT TO FGDC CSDGM XML FORMAT AS RESOURCE DESCRIPTION No

PLACE KEYWORDS Gulf of Mexico, Texas, Louisiana

THEME KEYWORDS national marine sanctuary, Gulf of Mexico, deepwater reef communities, salt dome

Hide Topics and Keywords ▲

Citation ▶

* TITLE FGBNMS_py

ALTERNATE TITLES Flower Garden Banks National Marine Sanctuary

CREATION DATE 2021-01-11 00:00:00

PUBLICATION DATE 2021-01-11 00:00:00

PRESENTATION FORMATS * digital map

FGDC GEOSPATIAL PRESENTATION FORMAT vector digital data

Hide Citation ▲

Citation Contacts ▶

RESPONSIBLE PARTY

INDIVIDUAL'S NAME ONMS GIS Coordinator

ORGANIZATION'S NAME Office of National Marine Sanctuaries

CONTACT'S ROLE point of contact

Hide Citation Contacts ▲

Resource Details ▶

DATASET LANGUAGES * English (UNITED STATES)

DATASET CHARACTER SET utf8 - 8 bit UCS Transfer Format

SPATIAL REPRESENTATION TYPE * vector

* PROCESSING ENVIRONMENT Version 6.2 (Build 9200) ; Esri ArcGIS 10.7.1.11595

CREDITS

Office of National Marine Sanctuaries

National Ocean Service
National Oceanic and Atmospheric Administration
U.S. Department of Commerce

ARCGIS ITEM PROPERTIES

- * NAME FGBNMS_py
- * SIZE 0.005
- * LOCATION https://sanctuaries.noaa.gov/library/imast_gis.html
- * ACCESS PROTOCOL Website

[Hide Resource Details ▲](#)

Extents ►

EXTENT

GEOGRAPHIC EXTENT

BOUNDING RECTANGLE

EXTENT TYPE Extent used for searching

* WEST LONGITUDE -94.308880

* EAST LONGITUDE -91.972730

* NORTH LATITUDE 28.354560

* SOUTH LATITUDE 27.783570

* EXTENT CONTAINS THE RESOURCE Yes

EXTENT IN THE ITEM'S COORDINATE SYSTEM

* WEST LONGITUDE -94.308880

* EAST LONGITUDE -91.972730

* SOUTH LATITUDE 27.783570

* NORTH LATITUDE 28.354560

* EXTENT CONTAINS THE RESOURCE Yes

[Hide Extents ▲](#)

Resource Maintenance ►

RESOURCE MAINTENANCE

UPDATE FREQUENCY as needed

[Hide Resource Maintenance ▲](#)

Resource Constraints ►

CONSTRAINTS

LIMITATIONS OF USE

NOT FOR LEGAL USE

[Hide Resource Constraints ▲](#)

Spatial Reference ►

ARCGIS COORDINATE SYSTEM

* TYPE Geographic

* GEOGRAPHIC COORDINATE REFERENCE GCS_North_American_1983

*** COORDINATE REFERENCE DETAILS**

GEOGRAPHIC COORDINATE SYSTEM

WELL-KNOWN IDENTIFIER 4269
 X ORIGIN -400
 Y ORIGIN -400
 XY SCALE 11258999068426.238
 Z ORIGIN -100000
 Z SCALE 10000
 M ORIGIN -100000
 M SCALE 10000
 XY TOLERANCE 8.9831528411952133e-09
 Z TOLERANCE 0.001
 M TOLERANCE 0.001
 HIGH PRECISION true
 LEFT LONGITUDE -180
 LATEST WELL-KNOWN IDENTIFIER 4269
 WELL-KNOWN TEXT GEOGCS["GCS_North_American_1983",DATUM
 ["D_North_American_1983",SPHEROID["GRS_1980",6378137.0,298.257222101]],PRIMEM
 ["Greenwich",0.0],UNIT["Degree",0.0174532925199433],AUTHORITY["EPSG",4269]]

REFERENCE SYSTEM IDENTIFIER

DIMENSION horizontal

* VALUE 4269

* CODESPACE EPSG

* VERSION 6.12(3.0.1)

*Hide Spatial Reference ▲***Spatial Data Properties ►**

VECTOR ►

* LEVEL OF TOPOLOGY FOR THIS DATASET geometry only

GEOMETRIC OBJECTS

FEATURE CLASS NAME FGBNMS_py

* OBJECT TYPE composite

* OBJECT COUNT 19

Hide Vector ▲

ARCGIS FEATURE CLASS PROPERTIES ►

FEATURE CLASS NAME FGBNMS_py

* FEATURE TYPE Simple

* GEOMETRY TYPE Polygon

* HAS TOPOLOGY FALSE

* FEATURE COUNT 19

* SPATIAL INDEX TRUE

* LINEAR REFERENCING FALSE

*Hide ArcGIS Feature Class Properties ▲**Hide Spatial Data Properties ▲***Data Quality ►**

SCOPE OF QUALITY INFORMATION ►
 RESOURCE LEVEL feature
 SCOPE DESCRIPTION
 FEATURES
 boundary file

Hide Scope of quality information ▲

Hide Data Quality ▲

Geoprocessing history ►

PROCESS

PROCESS NAME
 DATE 2021-01-07 07:38:00
 TOOL LOCATION c:\program files (x86)\arcgis\desktop10.7\ArcToolbox\Toolboxes\Data
 Management Tools.tbx\PointsToLine
 COMMAND ISSUED
 PointsToLine FGB_Expand_ALL_Pts_01062021 Poly_ID Point_ID NO_CLOSE
 INCLUDE IN LINEAGE WHEN EXPORTING METADATA No

PROCESS

PROCESS NAME
 DATE 2021-01-07 07:40:32
 TOOL LOCATION c:\program files (x86)\arcgis\desktop10.7\ArcToolbox\Toolboxes\Data
 Management Tools.tbx\FeatureToPolygon
 COMMAND ISSUED
 FeatureToPolygon FGBNMS_Lines_01072021 # ATTRIBUTES #
 INCLUDE IN LINEAGE WHEN EXPORTING METADATA No

Hide Geoprocessing history ▲

Distribution ►

DISTRIBUTION FORMAT
 * NAME Shapefile
 VERSION 1.0

TRANSFER OPTIONS
 * TRANSFER SIZE 0.005

Hide Distribution ▲

Fields ►

DETAILS FOR OBJECT FGBNMS_py ►
 * TYPE Feature Class
 * ROW COUNT 19

FIELD FID ►
 * ALIAS FID
 * DATA TYPE OID
 * WIDTH 4

- * PRECISION 0
- * SCALE 0
- * FIELD DESCRIPTION
Internal feature number.

- * DESCRIPTION SOURCE
Esri

- * DESCRIPTION OF VALUES
Sequential unique whole numbers that are automatically generated.

Hide Field FID ▲

FIELD Shape ►

- * ALIAS Shape
- * DATA TYPE Geometry
- * WIDTH 0
- * PRECISION 0
- * SCALE 0
- * FIELD DESCRIPTION
Feature geometry.

- * DESCRIPTION SOURCE
Esri

- * DESCRIPTION OF VALUES
Coordinates defining the features.

Hide Field Shape ▲

FIELD Polygon_ID ►

- * ALIAS Polygon_ID
- * DATA TYPE String
- * WIDTH 10
- * PRECISION 0
- * SCALE 0

Hide Field Polygon_ID ▲

FIELD Name ►

- * ALIAS Name
- * DATA TYPE String
- * WIDTH 20
- * PRECISION 0
- * SCALE 0

Hide Field Name ▲

FIELD Area_sqmi ►

- * ALIAS Area_sqmi
- * DATA TYPE Double

- * WIDTH 13
- * PRECISION 12
- * SCALE 5

[Hide Field Area_sqmi ▲](#)

[Hide Details for object FGBNMS_py ▲](#)

[Hide Fields ▲](#)

Metadata Details ►

- * METADATA LANGUAGE English (UNITED STATES)
- * METADATA CHARACTER SET utf8 - 8 bit UCS Transfer Format

METADATA IDENTIFIER 1D5B3768-D6B2-4C2A-95F4-D1D186BA0E24

SCOPE OF THE DATA DESCRIBED BY THE METADATA dataset

SCOPE NAME * dataset

* LAST UPDATE 2021-01-11

ARCGIS METADATA PROPERTIES

METADATA FORMAT ArcGIS 1.0

METADATA STYLE North American Profile of ISO19115 2003

STANDARD OR PROFILE USED TO EDIT METADATA NAP

CREATED IN ARCGIS FOR THE ITEM 2021-01-07 07:38:00

LAST MODIFIED IN ARCGIS FOR THE ITEM 2021-01-11 08:27:37

AUTOMATIC UPDATES

HAVE BEEN PERFORMED Yes

LAST UPDATE 2021-01-11 08:27:37

[Hide Metadata Details ▲](#)

Metadata Contacts ►

METADATA CONTACT

INDIVIDUAL'S NAME ONMS GIS Coordinator

ORGANIZATION'S NAME Office of National Marine Sanctuaries

CONTACT'S ROLE point of contact

[Hide Metadata Contacts ▲](#)

Metadata Maintenance ►

MAINTENANCE

UPDATE FREQUENCY as needed

[Hide Metadata Maintenance ▲](#)

Thumbnail and Enclosures ►

THUMBNAIL

THUMBNAIL TYPE JPG

Hide Thumbnail and Enclosures ▲